

Psyched to Talk: Enhancing Student Communication in Psychiatric Pharmacy

Tiffany Myrlee Hopkins, PharmD, BCPP
Clinical Pharmacist Practitioner – Mental Health
South Texas Veterans Health Care System
San Antonio, TX

Raeschell “Shelly” Williams, PharmD, MPH, BCPS, BCPP
Clinical Pharmacist Practitioner – Mental Health and Substance Use Disorders
South Texas Veterans Health Care System
San Antonio, TX

Presented by: AAPP Teaching Community



Disclosures

- Drs. Hopkins and Williams do not have financial or other relationship with the manufacturer(s) of any commercial product(s) or provider(s) of any commercial service(s) discussed in this CE activity.
- This presentation will not include discussion of off-label, experimental, and /or investigational use of drugs or devices.

Note to attendees: *while presenters are encouraged to disclose any conflicts and to use the best evidence available, the presentations are not peer reviewed and attendees should accordingly verify details prior to making significant practice changes.*

Learning Objectives

1 Develop awareness about the stigma associated with mental health conditions and how this impacts pharmacy student attitudes towards mental health

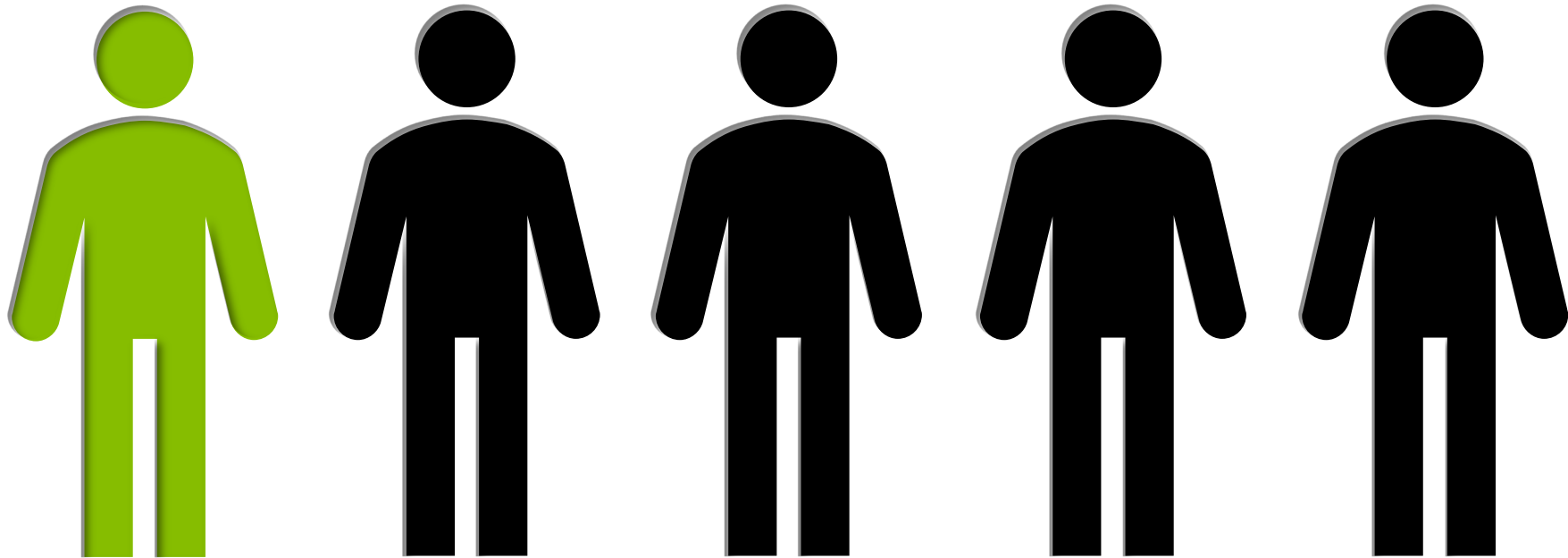
2 Explore potential barriers students faced in communicating with patients with mental health concerns

3 Identify and utilize resources and strategies to strengthen student knowledge and confidence

4 Reflect and share experiences to help build student comfortability in engaging with psychiatric patients and providers

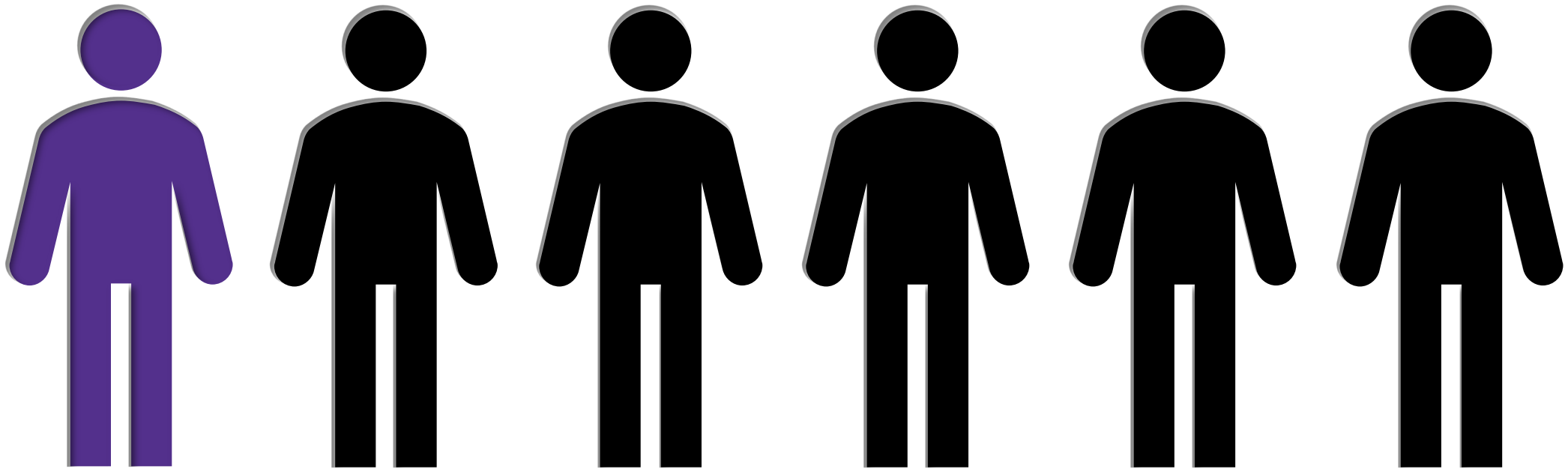
Mental Illness in the United States

It is estimated that approximately 1 in 5 adults in the United States live with a mental illness

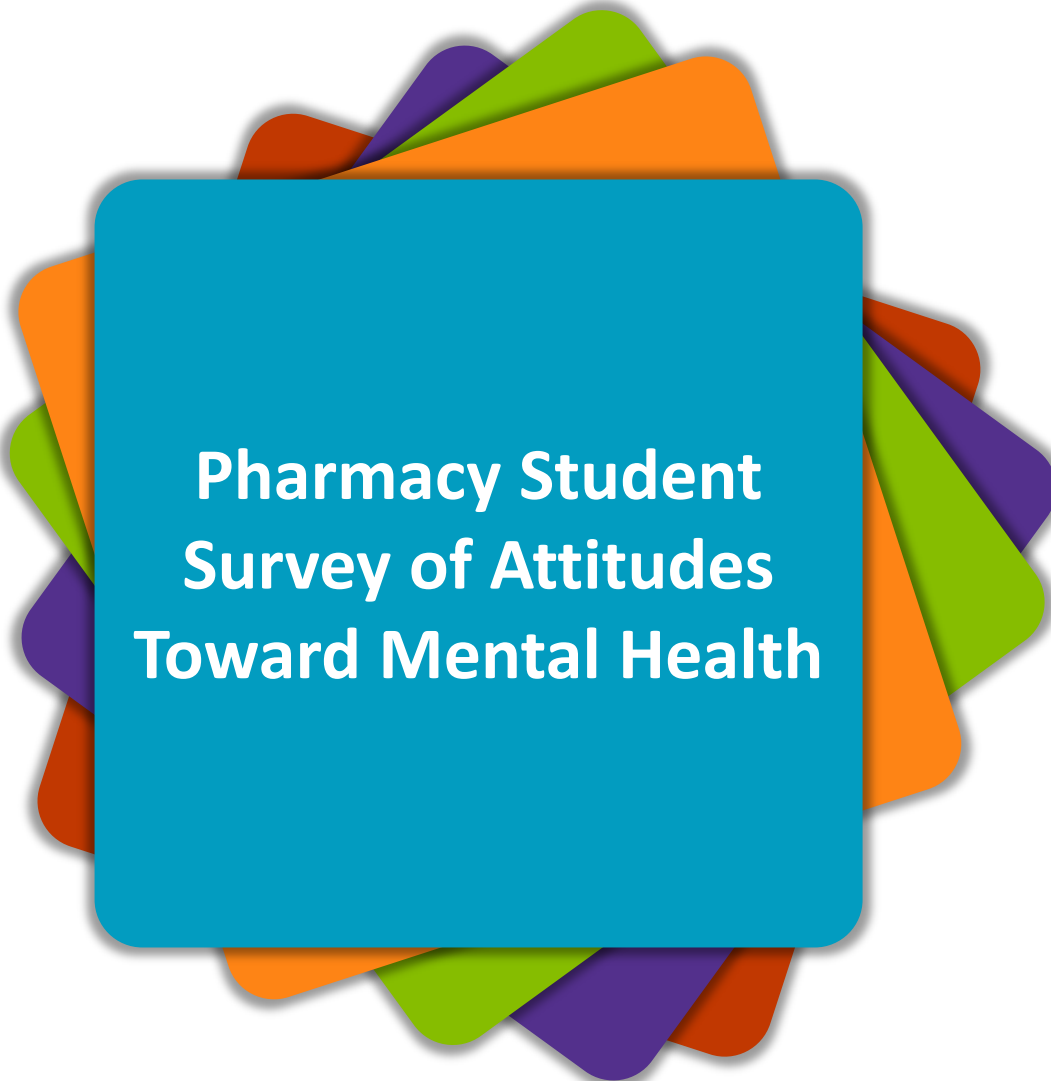


Mental Health Treatment in the United States

It is estimated that approximately 1 in 6 adults in the United States take a prescription medication for their mental health



Pharmacy Student Attitudes



Pharmacy Student Survey of Attitudes Toward Mental Health

Pharmacy Student Attitudes



25%

Felt that patients with
severe depression
were hard to talk to

Pharmacy Student Attitudes



29%

Felt that patients with
schizophrenia were
hard to talk to

Pharmacy Student Attitudes

< 50%

Expressed comfort
and/or confidence in
caring for patients
with schizophrenia and
bipolar disorder

Pharmacy Student Attitudes

29%

Felt they would feel
awkward asking
someone about their
antipsychotic
medication

Discussion Point #1

What are some reasons you have heard about why people may be uncomfortable talking to mental health patients?

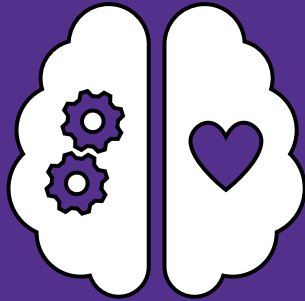


Potential Barriers for Communication



Potential Barriers for Communication

**Mental Health
Stigma**



Mental Health Stigma



**Public
Stigma**

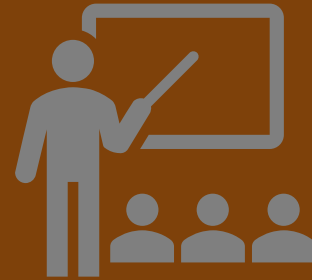


**Pharmacy
Student
Stigma**

Mental Health Stigma



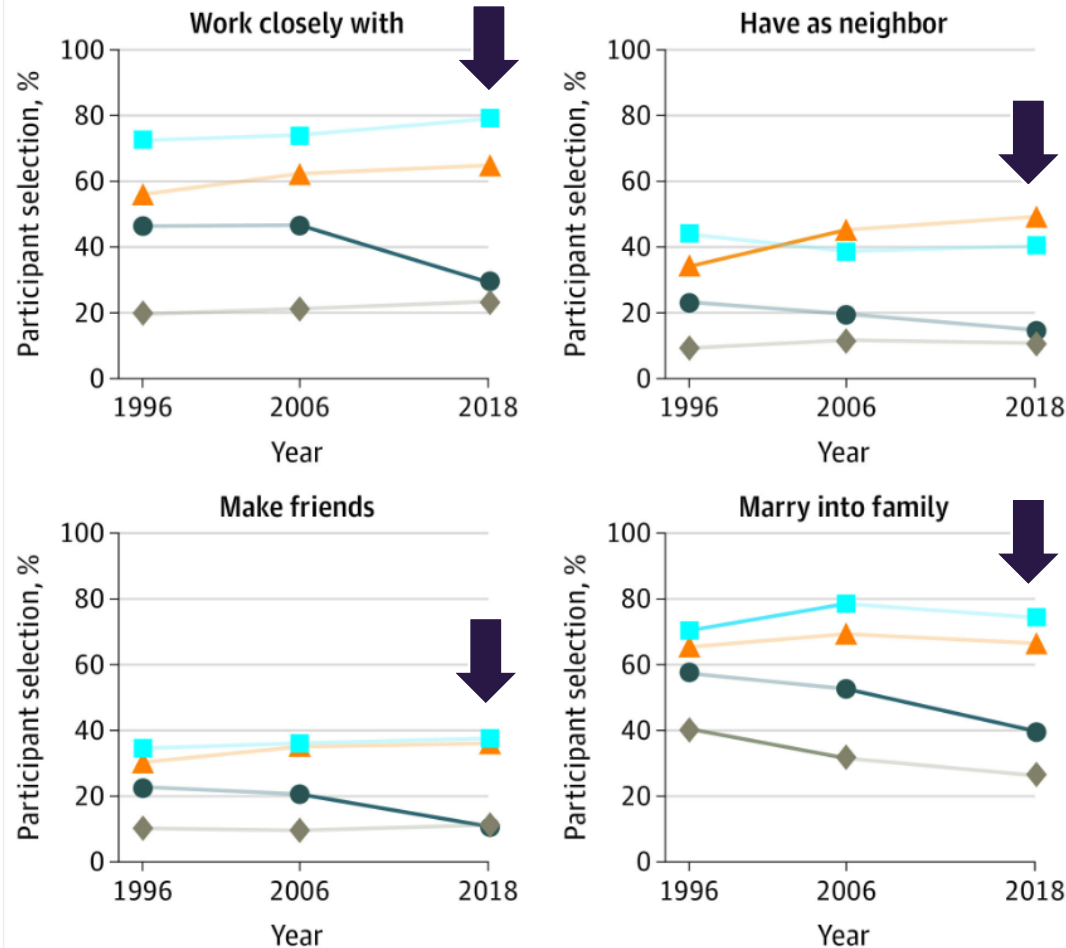
**Public
Stigma**



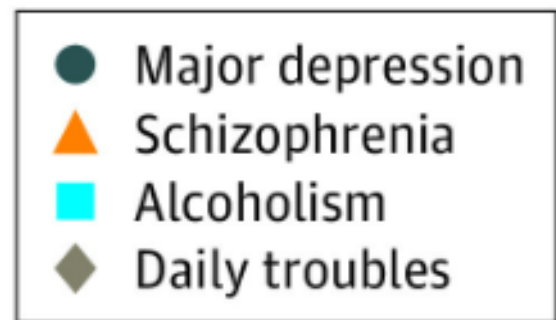
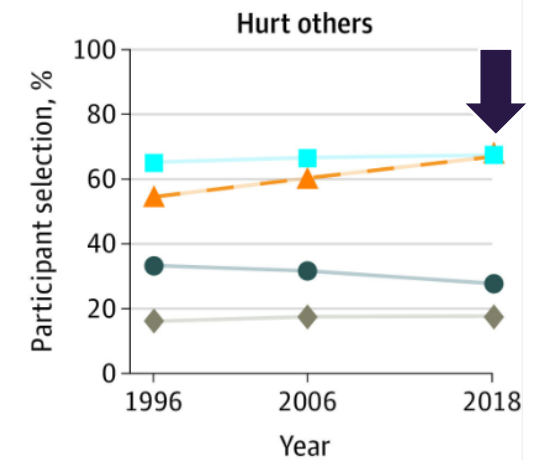
**Pharmacy
Student
Stigma**

Trends in Public Stigma of Mental Illness

B Percentage expressing unwillingness



C Percentage expressing concerns about dangerousness



Mental Health Stigma



**Public
Stigma**



**Pharmacy
Student
Stigma**

Mental Health Stigma

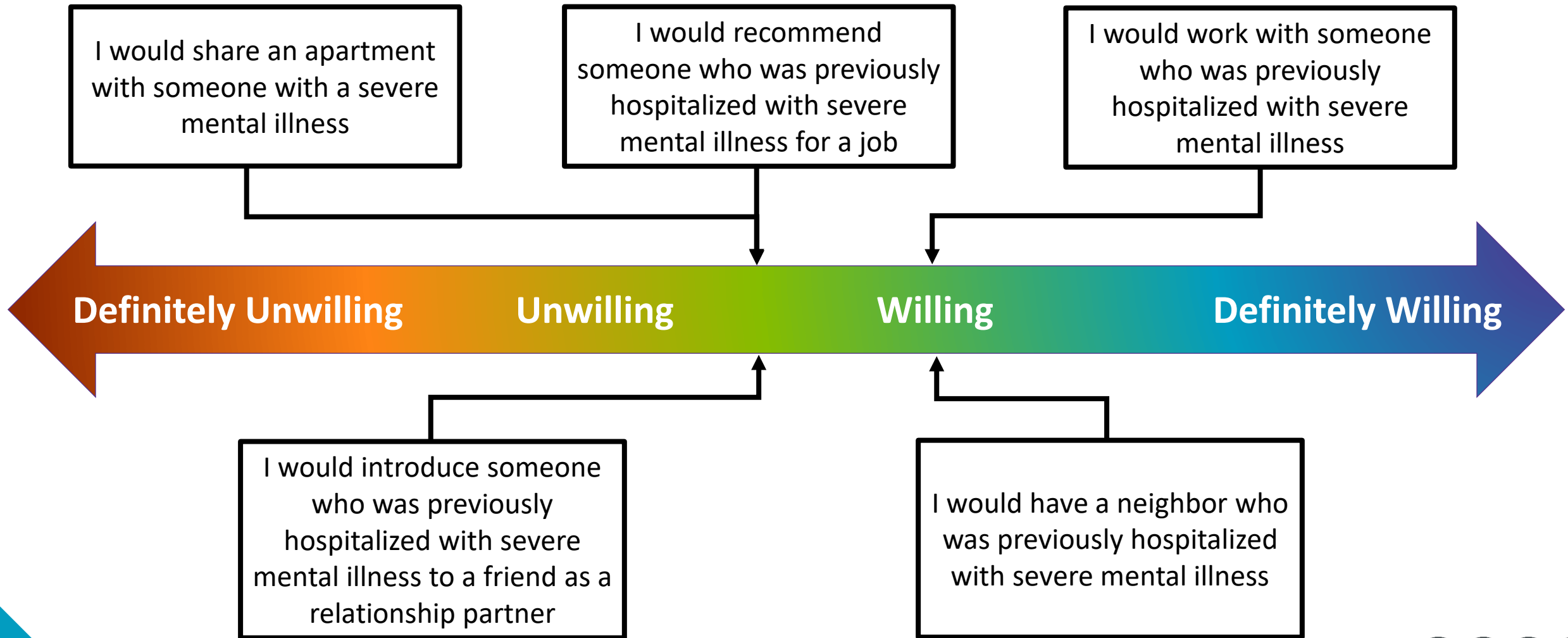


**Public
Stigma**

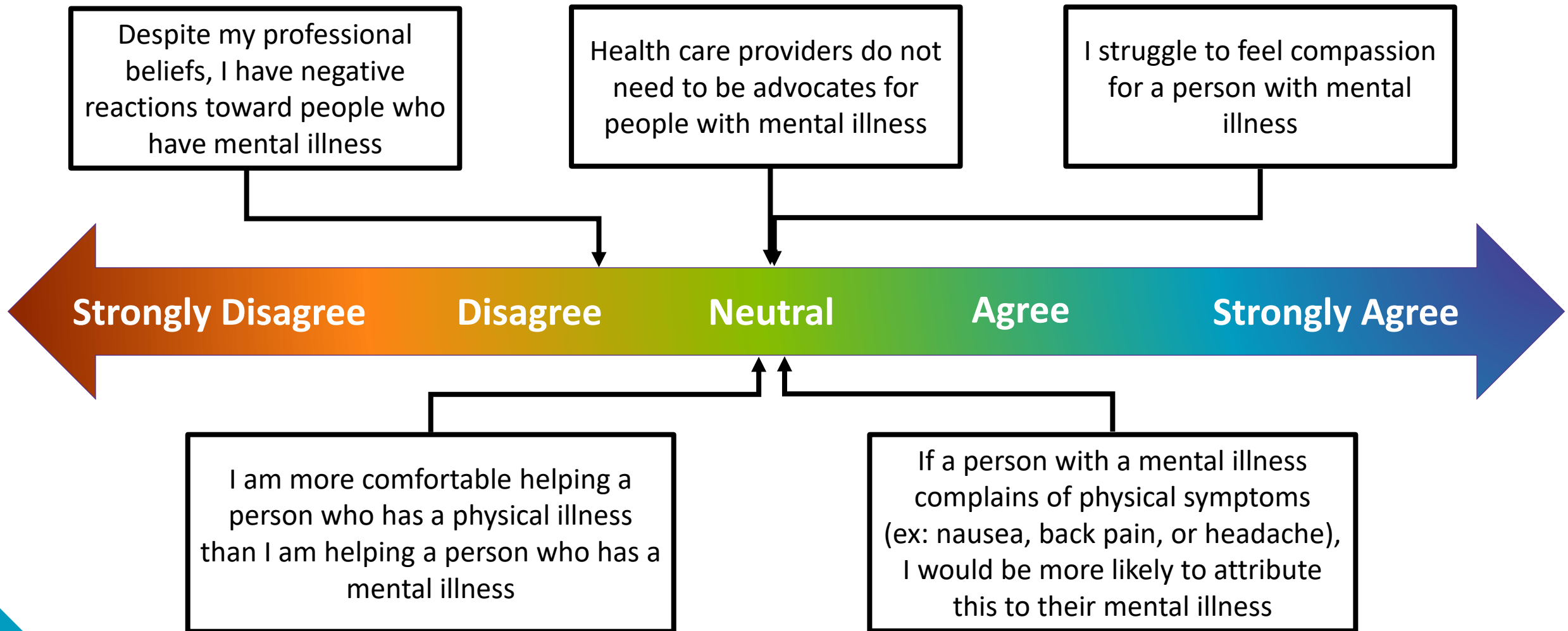


**Pharmacy
Student
Stigma**

Pharmacy Student Stigma: Social Distance Scale



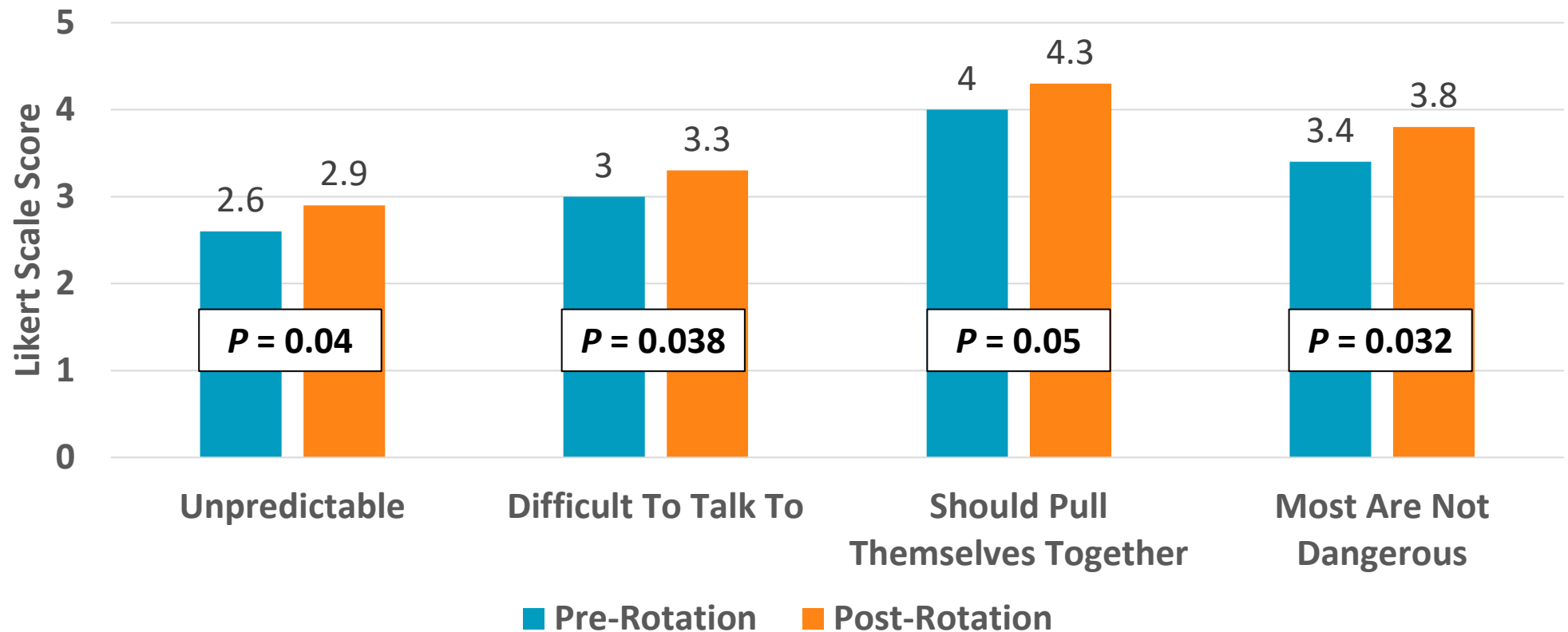
Pharmacy Student Stigma: Open Minds Scale



Our Thoughts: Offer An APPE Rotation!



Change In Stigmatization Scores Before & After
A Mental Health APPE Rotation



5-point Likert scale from 1 (strongly agree) to 5 (strongly disagree)
Positive statements are reverse scored. Higher scores indicate more favorable

Our Thoughts: Get Them Involved!



Our Thoughts: Let Them Have Fun!



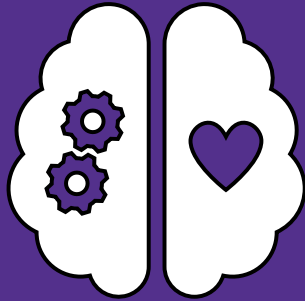
Discussion Point #2

What are some methods you have used to help learners overcome stigma and help them become more comfortable with patient interactions?



Potential Barriers for Communication

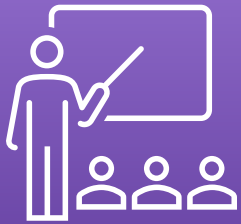
**Mental Health
Stigma**



Potential Barriers for Communication



What About Your Pharmacy Schools?



Didactics

Is mental health part of your didactic course work? If so, what year is it taught?



Rotations

Is mental health a required clinical rotation or just offered as an elective?



Prepared

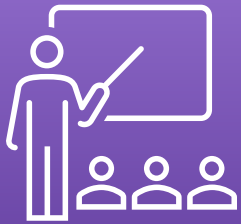
Do you think students feel prepared to provide care to mental health patients?



Counseling

Do you think students feel comfortable counseling on mental health medications?

What About Your Pharmacy Schools?



Didactics

**72.3% of
students
reported having
mental health as
part of their
didactic course**

Rotations

Prepared

Counseling

What About Your Pharmacy Schools?

Didactics



Rotations

**4.3% of students
reported their
mental health
rotation as
required (21% as
an elective)**

Prepared

Counseling

What About Your Pharmacy Schools?

Didactics

Rotations



Prepared

58.2% of students
reported feeling
prepared to
provide care to
mental health
patients

Counseling

What About Your Pharmacy Schools?

Didactics

Rotations

Prepared



Counseling

**41.4% of students
reported feeling
less comfortable
counseling on
mental health
medications**

Discussion Point #3

What resources do you use to help your students improve their baseline knowledge of mental health diagnoses and medications?



Example Resources

Compile a shared drive/folder or create a FAQ for students and residents to reference throughout rotation

Clinical
Practice
Guidelines

AAPP
Education
& Resource
Documents

NAMI
Medication
Education
Sheets

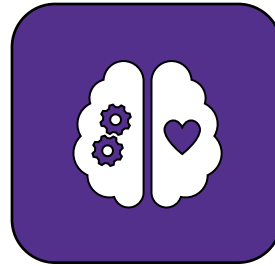
Antipsychotic
Dose
Conversion
Calculator

Helpful
YouTube
Channels

Potential Barriers for Communication



Potential Barriers for Communication



**Minimal
Inpatient
Experience**



**Minimal
Outpatient
Experience**

Pharmacy Student Counseling



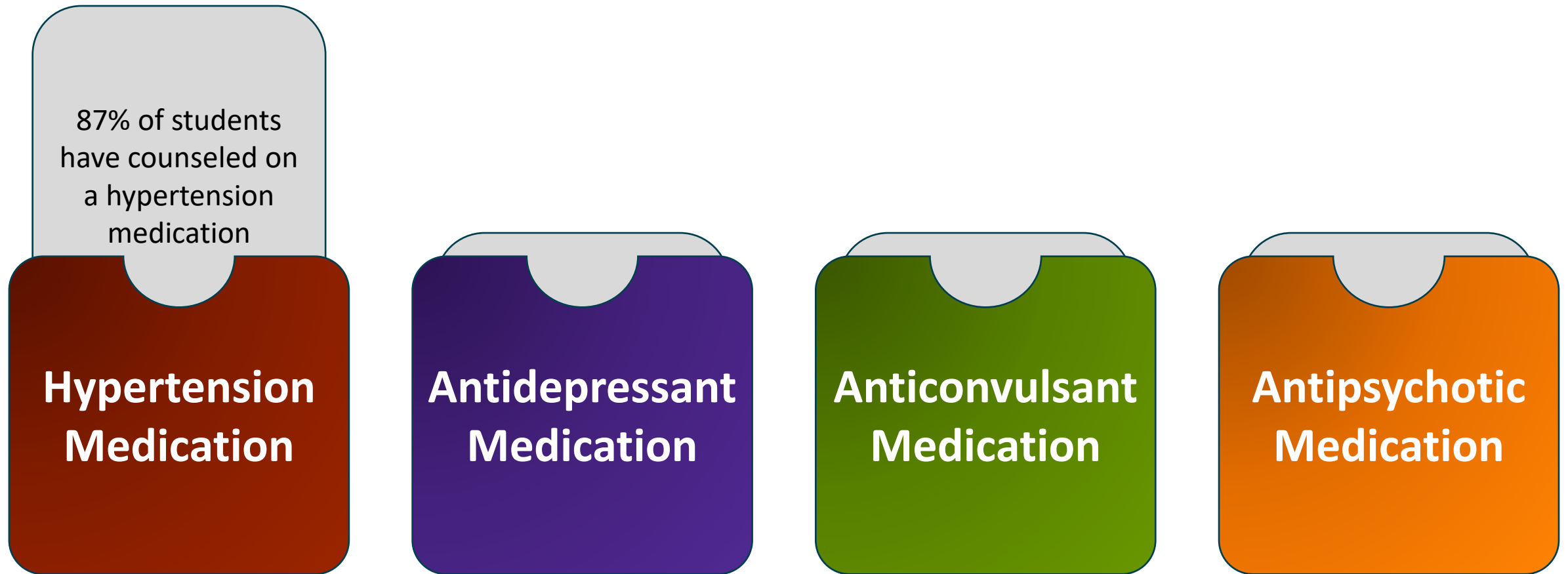
**Hypertension
Medication**

**Antidepressant
Medication**

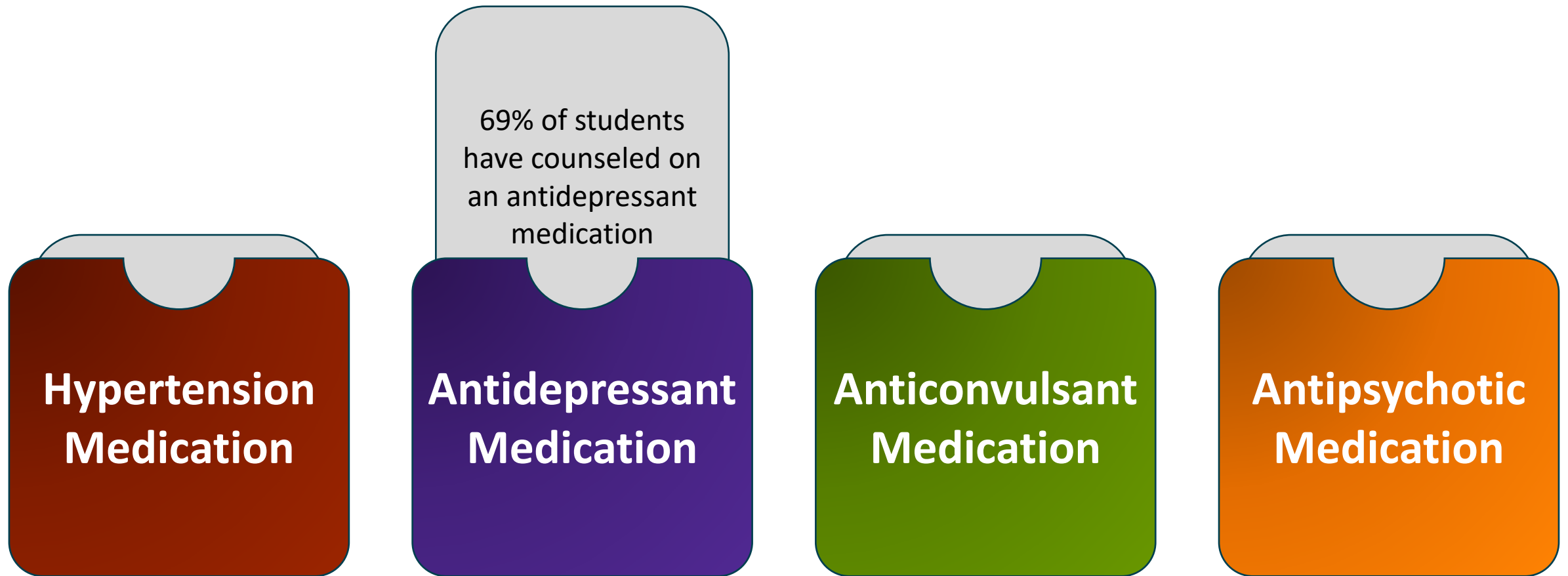
**Anticonvulsant
Medication**

**Antipsychotic
Medication**

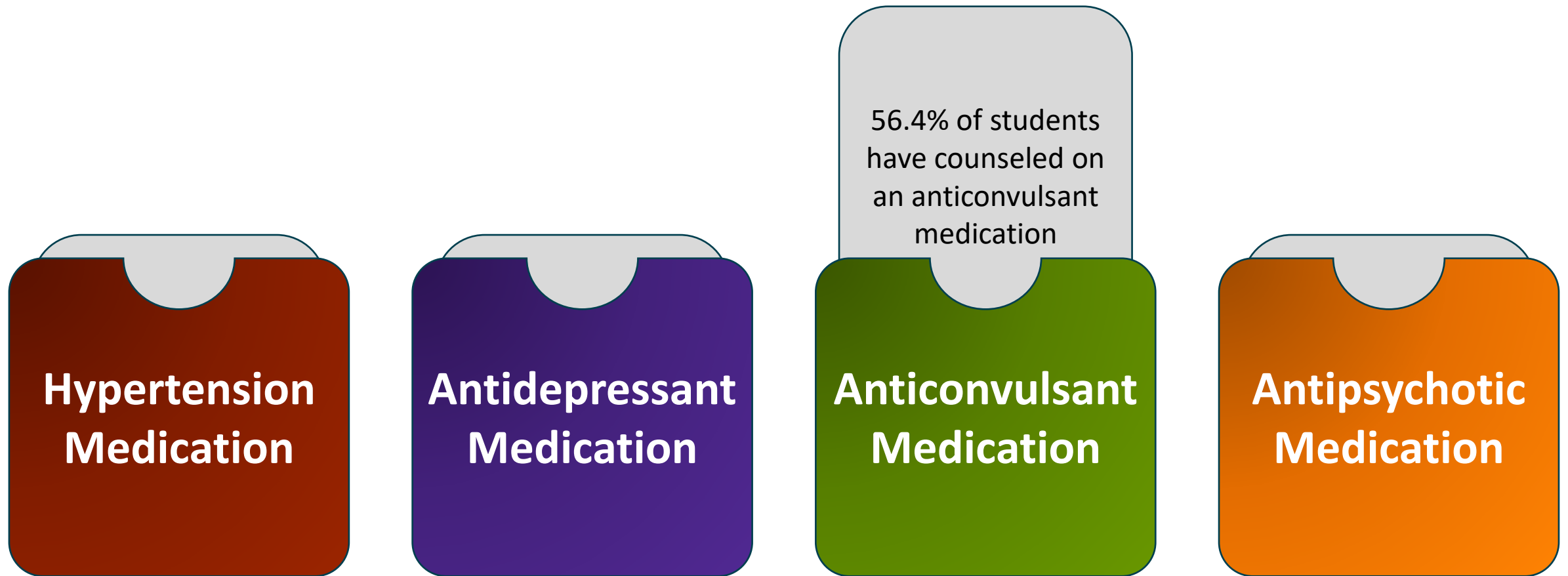
Pharmacy Student Counseling



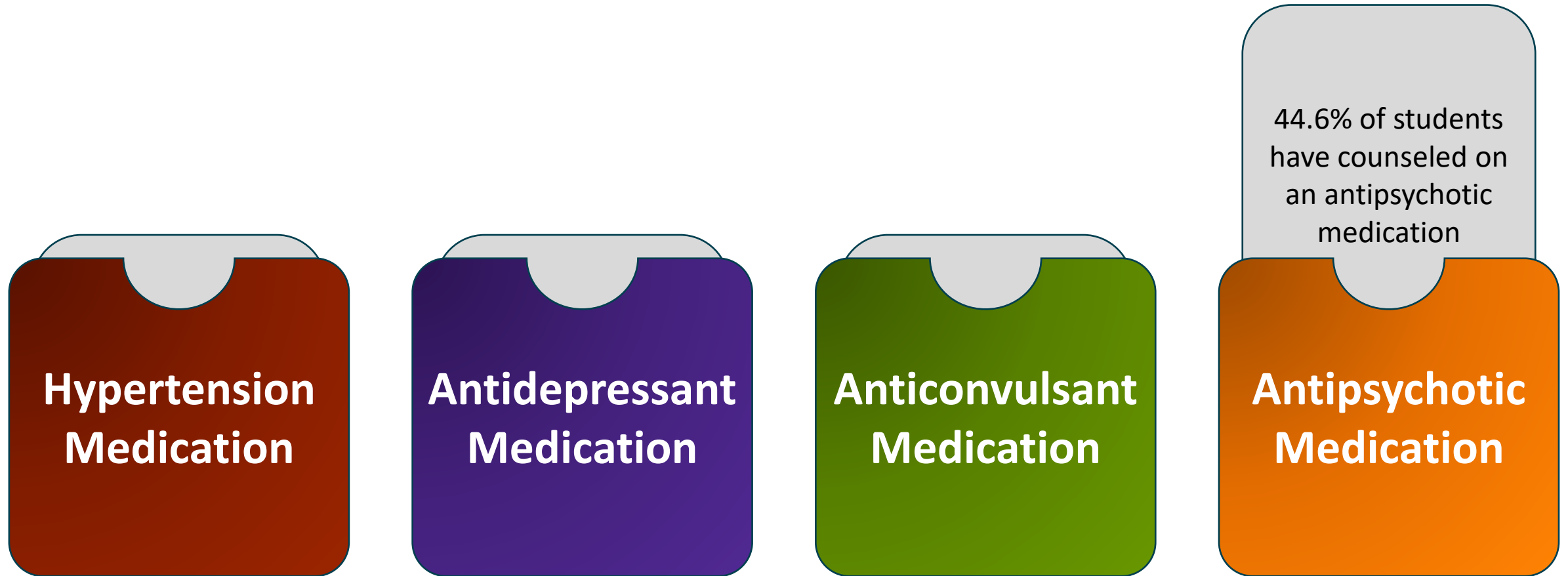
Pharmacy Student Counseling



Pharmacy Student Counseling

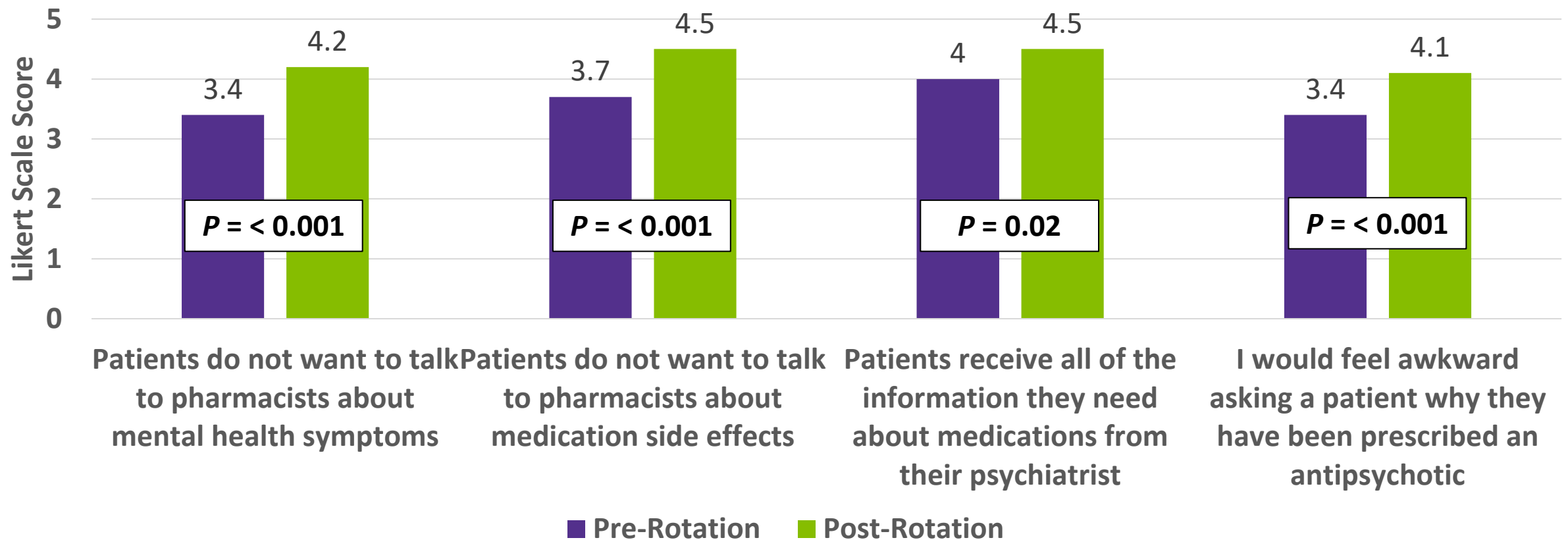


Pharmacy Student Counseling



Impact of a Mental Health Rotation

Change In Pharmaceutical Care Services For Schizophrenia
Before & After A Mental Health APPE Rotation



5-point Likert scale from 1 (strongly agree) to 5 (strongly disagree)
Positive statements are reverse scored. Higher scores indicate more favorable



What Can I Do To Help?

Set The Stage

Communicate the workflow of the rotation site including the role of the pharmacist & pharmacy student

What Can I Do To Help?

Incorporate

Get the student involved with the treatment team or patient care activities as soon as possible

What Can I Do To Help?

Establish Relationships

Introduce the student
at every encounter
and emphasize they
are a member of the
team

What Can I Do To Help?

4

3

2

1

Be A
ROLE MODEL!



What Can I Do To Help?



Assessments & Education

1. Set expectations for learner at the beginning of the rotation
2. Let student observe at least 2-3 examples (AIMS, counseling, etc.)
3. Teach student how to identify who would benefit and when to engage
4. Once comfortable, put student in charge of identifying and performing all assessments & education

Be A
ROLE MODEL!



1

What Can I Do To Help?



Patient Interviews

1. Set expectations for learner at the beginning of the rotation
2. Ensure patient knows the student is a participant of treatment planning
3. Teach students how to use recovery-language to avoid use of inappropriate language that may be triggering
4. Could lead a “mock interview” with student for practice

BE A
ROLE MODEL!



What Can I Do To Help?

4



Medication Education Groups

1. This is a great way for students to interact with patients in a less formal setting
2. Let student observe 2-3 groups prior to attempting themselves
3. Get them involved by creating their own handouts or games
4. Teach them how to identify patients that may not be appropriate for group setting

3

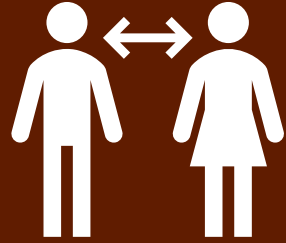
2

1

BE A
ROLE MODEL!



What Can I Do To Help?



Physician Interactions

1. Have them attend treatment team rounds and meetings as much as possible
2. Encourage students to answer drug information questions early in rotation
3. If able, have students sit in treatment team room with psychiatry residents or medical students

4

3

2

1

BE A
ROLE MODEL!



Discussion Point #4

What experiences have you used to help students become more comfortable communicating with mental health patients and providers?



Questions?

Thank you for attending!



Appendix: Helpful Links

a. Helpful YouTube Channels:

- a. Memorable Psychiatry: <https://www.youtube.com/@MemorablePsych>
- b. Dirty Medicine: <https://www.youtube.com/playlist?list=PL5rTEahBdxV6VebHtDz5tI756eQFWTNsr>
- c. Psychopharmacology Institute:
https://www.youtube.com/results?search_query=psychopharmacology+institute
- d. NEI Psychopharm: https://www.youtube.com/results?search_query=nei+psychopharmacology
- e. Ninja Nerd: <https://www.youtube.com/@NinjaNerdOfficial>

b. Treatment Guidelines

- a. AAPP: <https://aapp.org/guideline/external>
- b. VA/DoD: <https://www.healthquality.va.gov/>
- c. Medication Education Sheets
 - a. NAMI: <https://www.nami.org/About-Mental-Illness/Treatments/Mental-Health-Medications/>
- d. Antipsychotic Dose Conversions
 - a. https://psychopharmacopeia.com/antipsychotic_conversion.php